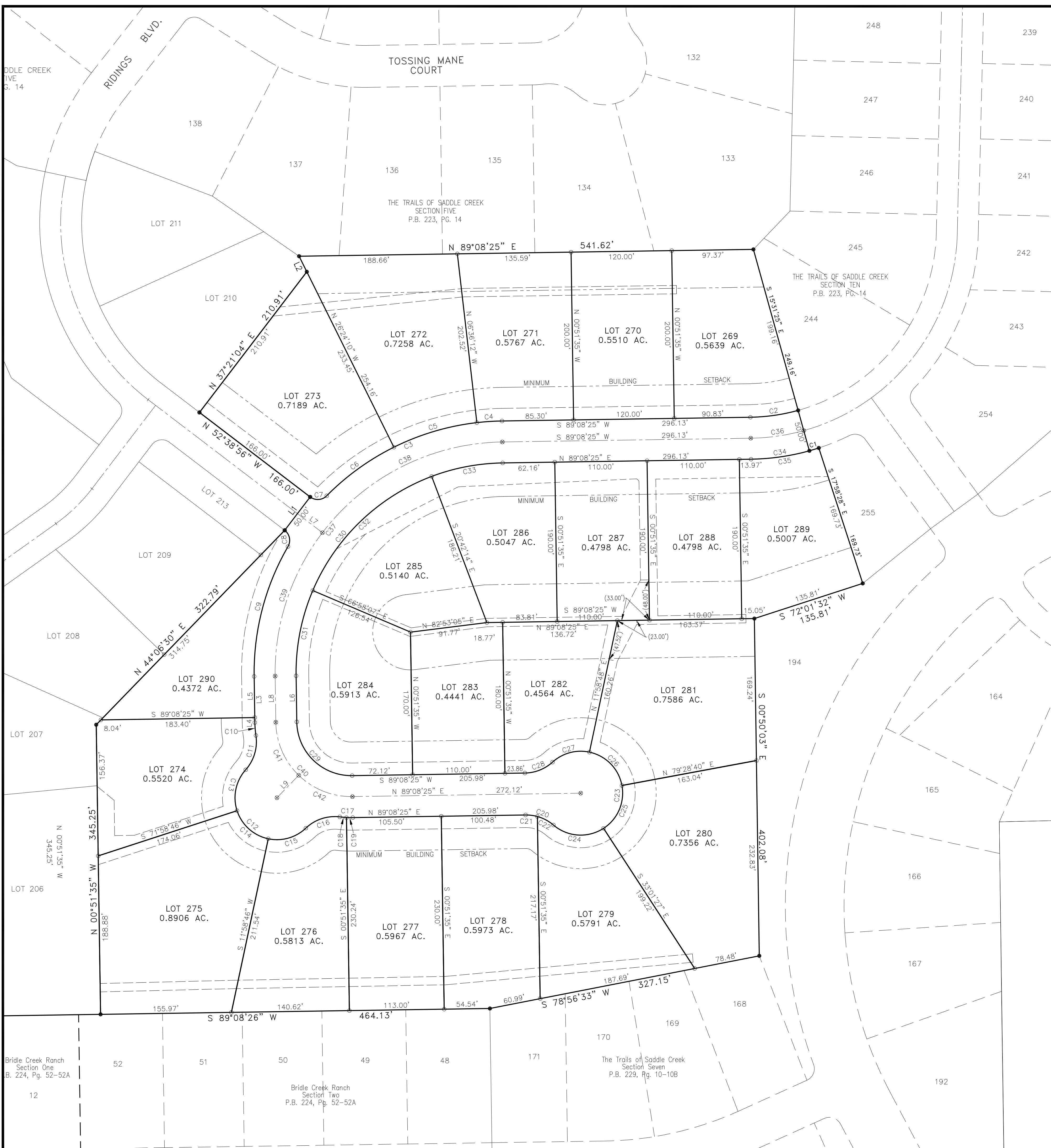


RECORD PLAN THE TRAILS OF SADDLE CREEK SECTION TWELVE

LOCATED IN:
SECTION 23, TOWN 3, RANGE 5 M.Rs.
WASHINGTON TOWNSHIP
MONTGOMERY COUNTY, OHIO
CONTAINING: 14.5586 AC.
JUNE 23, 2020



SETBACK DATA
 LOTS #269-#272, #274-#289
 MIN. FRONT YARD = 40'
 MIN. REAR YARD = 45'
 MIN. SIDE YARD = 5' MIN., 27' BETWEEN BUILDINGS

LOT #273
 MIN. FRONT YARD = 45'
 MIN. REAR YARD = 45'
 MIN. SIDE YARD = 13.5'

ACREAGE TABULATION

RESIDENTIAL LOTS #269 - #289	=	12.3983 AC.
OPEN SPACE LOT #290	=	0.4372 AC.
RESIDENTIAL STREET R/W	=	1.7231 AC.
TOTAL	=	14.5586 AC.

- MONUMENT LEGEND —
- 5/8" Iron Pin found (#5 Rebar)
 - 5/8" Iron Pin set with yellow plastic cap stamped: "Reinke L.S. #6207"
 - ⊙ Iron Pipe found
 - ⊗ Stone found
 - ▲ Spike found
 - △ Spike set
 - ⊗ Mag Nail Set
 - ⊙ Mag Nail Found
 - ⊗ Concrete Monument Set
 - ⊙ Concrete Monument Set
 - Axle found

SHEET 2 OF 2
PREPARED BY:



REINKE GROUP
 Engineering / Surveying / Land Planning
 Landscape Architecture / GPS Surveying
 959 Congress Park Drive
 Centerville, OH 45459
 (937) 434-4810 ph.
 (937) 434-3975 fax
 www.ReinkeGroup.com

Bridle Creek Ranch
Section One
B. 224, Pg. 52-52A

Bridle Creek Ranch
Section Two
P.B. 224, Pg. 52-52A

The Trails of Saddle Creek
Section Seven
P.B. 229, Pg. 10-10B